



# IntelliTalk 2 Switch Basics

## Connecting to the Classroom Computer

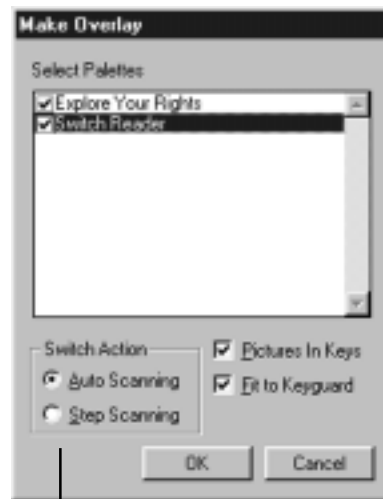
*Keep students with physical disabilities and technology in the classroom. Set-up a single switch, switch interface and IntelliTalk 2 on the computer.*

### IntelliKeys

Make an overlay for the IntelliTalk2 document with Overlay Maker. To do so, open the IntelliTalk2 document or template. Select Make Overlay from the IntelliKeys menu. Select Auto Scanning under Switch Action. Click OK. Click Save. Print the overlay only if direct selectors will be using the activity in addition to switch users. Close the overlay file. Quit or Exit from Overlay Maker. Return to IntelliTalk2 and test.



**Fast Tip:** Open the IntelliTalk 2 document. Go to the IntelliKeys menu and send the Single Switch Typist Overlay.



Select Auto Scanning for students who use a single switch. Step scanning requires two switches.

### Don Johnston Switch Interface

With the computer shut down, connect the Switch interface to appropriate port. On a PC, connect the interface to the keyboard port and plug the keyboard into the interface. Plug the switch into the hole marked 1. Open the IntelliTalk 2 document that contains the text to be read. Go to the Options menu. Select Dedicated Scanning. A dialog box will appear. Click on Keyboard. Test the switch. Press [Esc] on the keyboard to stop scanning at any time.

### Switch Adapted Mouse

With the computer shut down, replace the standard mouse with the switch-adapted mouse. Plug the switch into the hole on the side of the mouse. Open the IntelliTalk 2 document that contains the text to be read. Go to the Options menu. Select Dedicated Scanning. A dialog box will appear. Click on Mouse. Use the switch to scan palettes and make selections. Test the switch. Press [Esc] on the keyboard to stop scanning anytime.



**Fast Tip:** To quickly activate Dedicated Scanning mode, hold down [Control] and press [Delete].